

G•scan EQUINE

The Top Class Equine MRI



esaote VET
HEALTH WITH CARE

Esaote MRI measure of excellence

Creativity and innovation in healthcare represent two aspects that have inspired Esaote since the introduction of its first Dedicated MRI system in 1993. Thanks to strong investments in R&D activities and focus on customer needs, Esaote has broadened its product offering, gaining recognition from industry and the medical community as leader in Dedicated MRI. For over more than two decades, Esaote has maintained its leadership position in the Dedicated MRI segment, developing a product portfolio for the Human and Veterinary market.

In 2001 the first Vet MRI system dedicated to small animal applications was launched and over the years Esaote has continued to distinguish itself as innovator introducing the first tilting MRI system: G-scan. This MRI is a revolutionary system for scanning patients in the upright position.

Esaote has been a true pioneer in developing the tilting technology, allowing seamless rotation from 0 to 90 degrees. This innovation was specifically designed to explore new clinical perspectives and applications, with a particular focus on equine imaging, offering veterinarians unprecedented flexibility and precision in their diagnostic approach.

Why is G-scan Equine so unique?

While many MRI systems can scan equine limbs from the carpus and tarsus downward, the **G-scan Equine** also enables imaging of the stifle joint.

Its revolutionary design and rotating mechanism allow optimal patient positioning for stifle joint imaging.



Veterinary-Specific MRI: customized technology for animal care

The voice of Customer

G-scan Equine has been designed in close partnership with leading equine specialists, ensuring that imaging sequences and exam protocols are thoroughly tested in research environments. The software incorporates accurate veterinary terminology and image orientation, combined with a dedicated patient positioning scheme, making exam management simpler and more efficient.

Why is image quality so good?

eXP Technology enhances MRI exams through advanced acquisition and reconstruction methods, reducing scan times and improving overall image quality.

Building on this foundation, Esaote has introduced e-SPADES, an AI-driven platform that further elevates image clarity and efficiency.



Unlock next-gen diagnostics



Sustainable MRI

A helium-free MRI system with low power consumption, designed as a plug-and-play solution that eliminates the need for cryogenic liquids. This results in significantly lower maintenance costs and provides a safer, more practical way to manage your practice. Its energy-efficient design allows it to operate on a standard 220V single-phase power supply.



Excellent Image Quality

Thanks to long-term collaboration with leading clinics, we are able to test study protocols and optimize internal settings to achieve superior image quality, enabling reliable diagnoses and more efficient workflows.



Empowered by Artificial Intelligence

Esaote introduces artificial intelligence into its MRI systems as a fully integrated and customized solution.

The new A.I. platform e-SPADES*, consists of advanced HW and sophisticated SW algorithm for a faster, sharper, and smarter examination.



Advanced Hardware/Software

eXP technology substantially improves MRI examinations by reducing scan times and improving image quality. EVO 3D reduces voxel size, enabling incredibly high-resolution Multi-Planar-Reconstruction (MPR).



Dedicated user Interface

G-scan Equine features an intuitive veterinary interface with clear dropdowns and precise positioning tools, streamlining exam planning with species-specific MRI orientation. It also includes a comprehensive library of dedicated scan protocols, developed in collaboration with leading veterinary experts to ensure exceptional image quality.



Patient Handling and Monitoring

The open structure, combined with the dedicated coil ensures easy and quick positioning of the animal, even when dealing with large sizes. Moreover, the real-time monitor supports accurate alignment with the isocenter, simplifying the workflow.

Dedicated RF coils

Correct positioning of the district of interest in the magnet is key to obtain a good image quality. **G-scan Equine** provides Dedicated RF Coils that facilitates the work of the MRI tech making the patient positioning easier and faster, and delivering excellent image quality.



Linear coil



DPA coil



Linear multipurpose flex coil



Linear small flex coil*



DPA open coil

The real-time acquisition allows the operator to check patient positioning directly from the system monitor.



Additional optional coils to improve small animal examination.



DPA Small Parts coil*

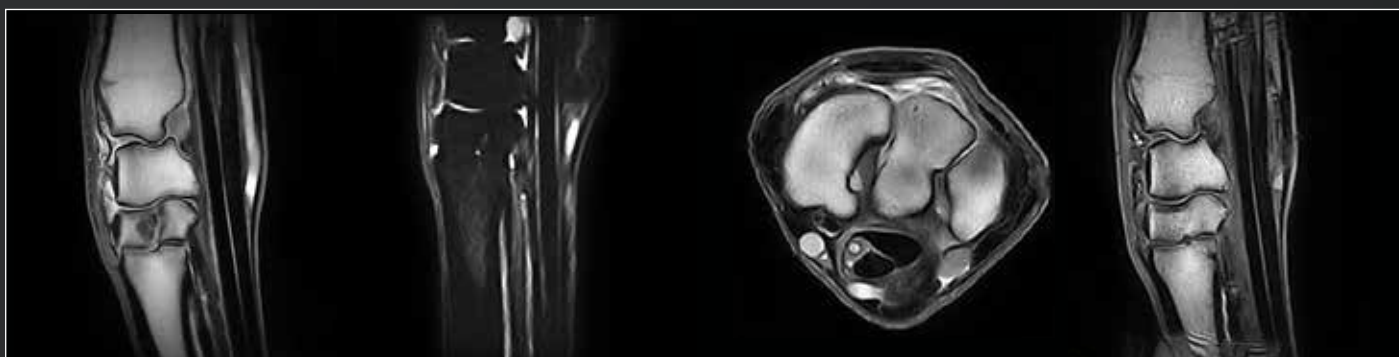


DPA small coil*

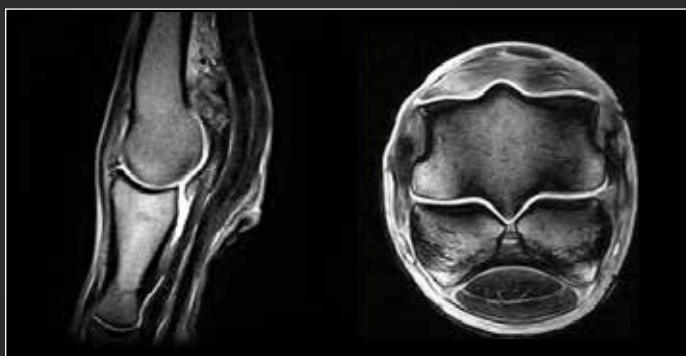
*Optional

See better, care deeper

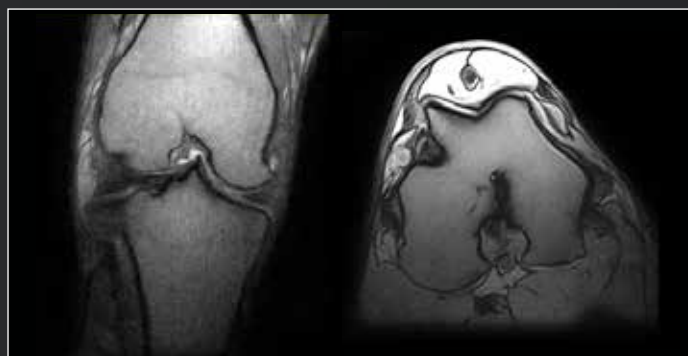
Advanced computing and smart algorithms drive high-quality imaging and swift, reliable diagnostics across comprehensive exams, including vascular pathologies, neurological conditions, and joint assessments.



Carpus



Fetlock



Stifle



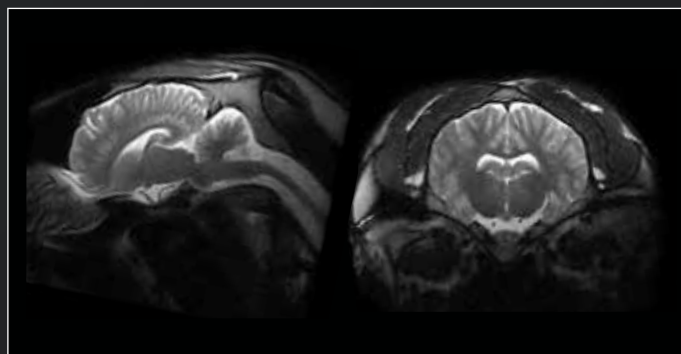
Hock



Pastern



Splanchnocranium



Neurocranium

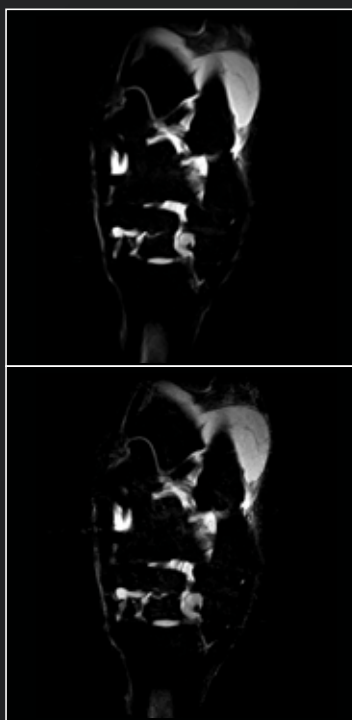
e•SPADES

Your Ace for Diagnostic Excellence

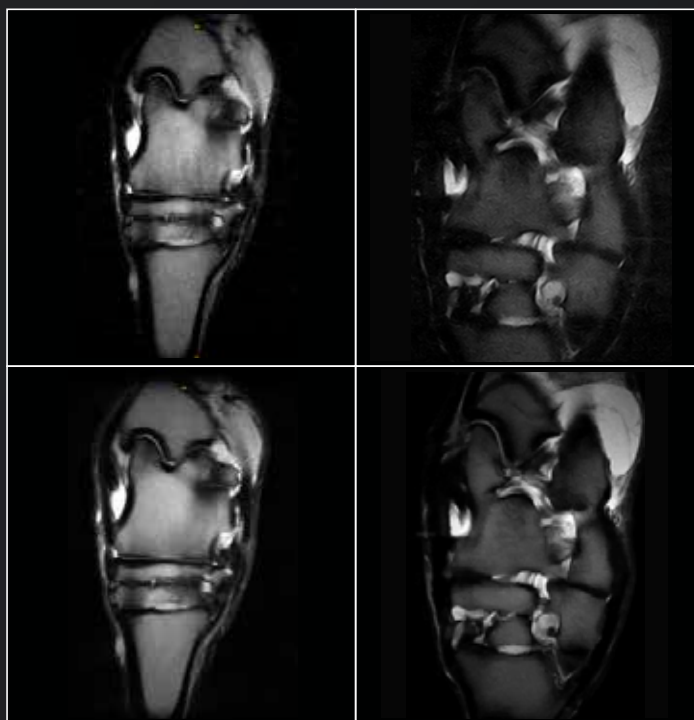
By using **HyperClarity***, an advanced software feature powered by deep learning to enhance resolution, reduce noise, and improve soft tissue contrast, Esaote delivers sharper MRI images for more confident veterinary diagnoses.

256x256
Scan Time = 10'44"

516x516
Scan Time = 7'19"



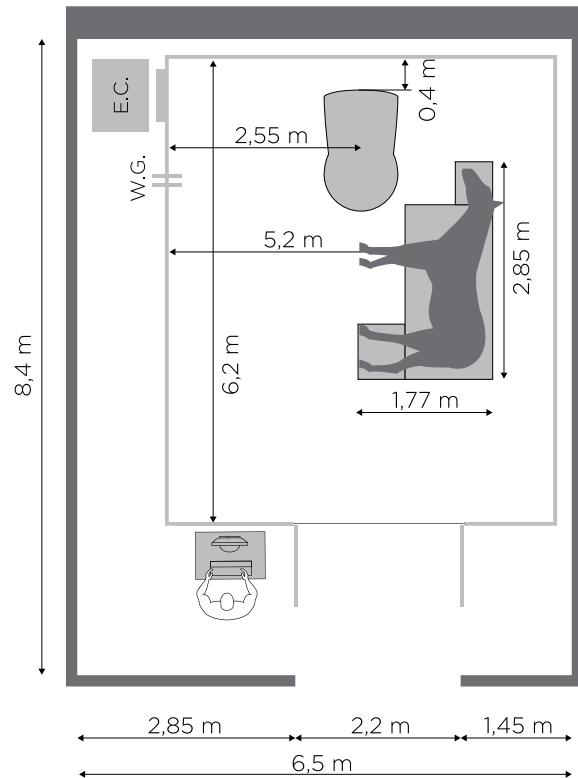
1056x1056
Scan Time = 5'56"



1040x1040
Scan Time = 5'44"

G-scan Equine installation

The installation of the **G-scan Equine** MRI is relatively simple as the system does not require any sophisticated cooling and venting system that are required for traditional MRI units. The power consumption is low so a standard 220V single phase power is sufficient to run the MRI.

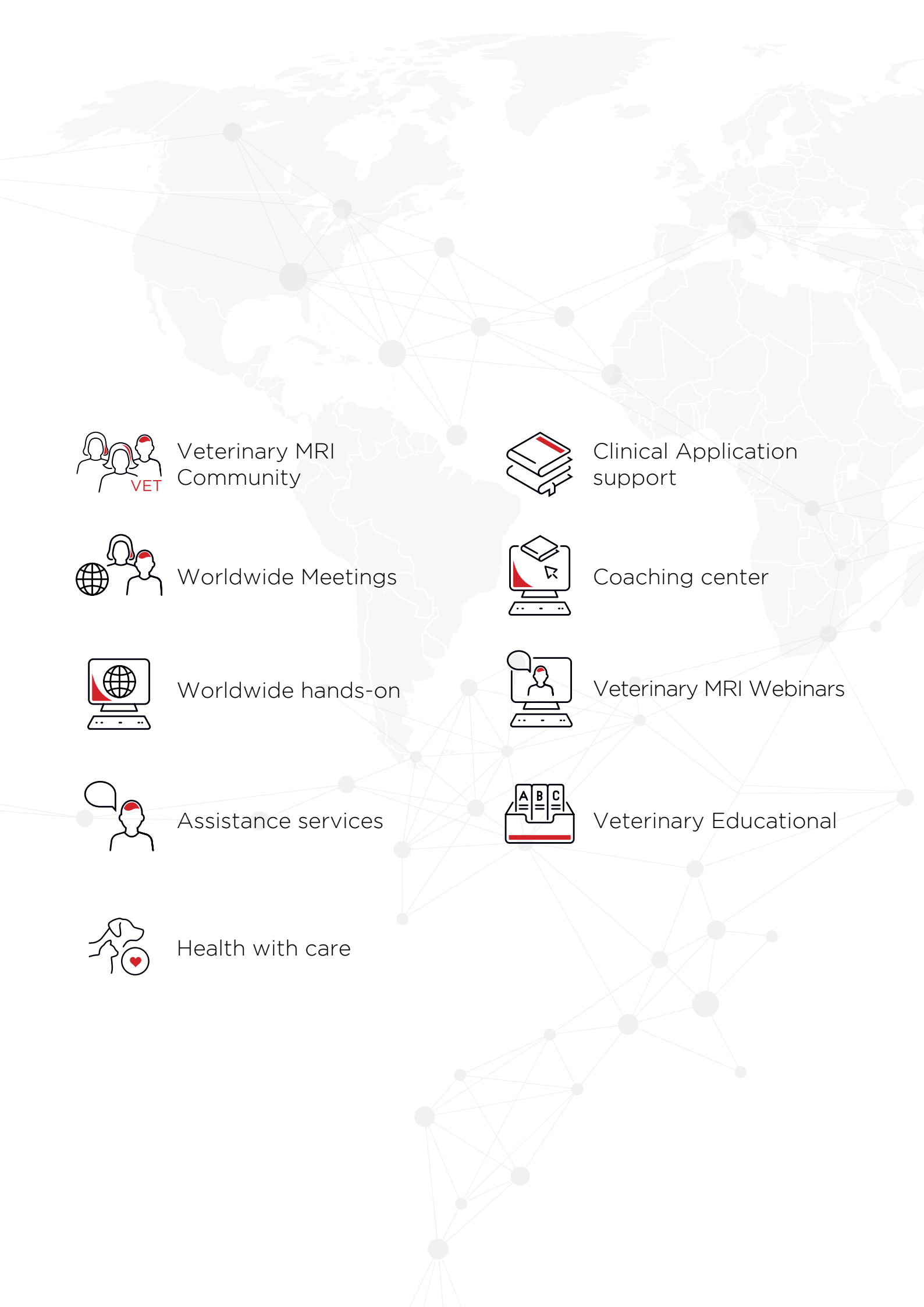


Training and Education

The basic theories and principles of MRI are always the backbones of any MRI training program. On-site training together with MRI basics, will give you practical guidelines on developing your study protocols, optimizing sequence parameters and patient positioning as well as the best imaging techniques for single applications. In time educational needs will grow and thanks to our extensive network of specialists, we will support you in getting connected with like minded Veterinarians to share best practices.

Since the first international educational course in 2004, Esaote has proudly maintained its legacy and commitment to its customers organizing international conference that usually comprise equine applications and small animal. This represents an important forum of discussion where internationally recognized specialists showcase their research and case studies and where worldwide customers gather in order to learn about the latest developments.





Veterinary MRI
Community



Clinical Application
support



Worldwide Meetings



Coaching center



Worldwide hands-on



Veterinary MRI Webinars



Assistance services



Veterinary Educational



Health with care

Be part of the veterinary community

Esaote's robust collaboration with leading veterinary institutions ensures our constant alignment with the dynamic needs and trends in the veterinary field.

This approach not only enriches our understanding but also fosters a sense of collaboration and shared purpose within the broader veterinary community.

Together, we are shaping the future of veterinary care.





160000197MA Ver.02



Esaote S.p.A. - sole-shareholder company

Via Enrico Meloni 77, 16152 Genova, ITALY, Tel. +39 010 6547 1, Fax +39 010 6547 275,
info@esaote.com www.esaote.com

Technology and features are device/configuration-dependent. Specifications subject to change without notice. Information might refer to products or modalities not yet approved in all countries. Product images are for illustrative purposes only. For further details, please contact your Esaote sales representative.

 Italian design 

Please visit us online
for more information

