

Supreme VET

Supreme imaging, tailored for pets



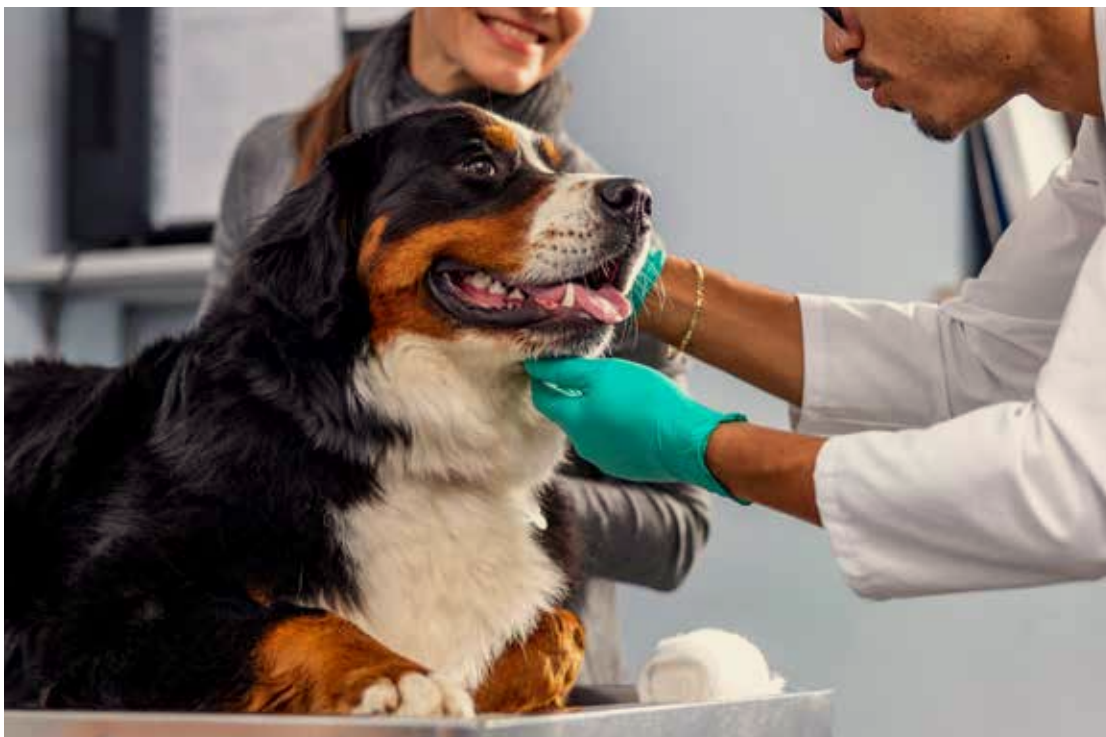
esaote VET
HEALTH WITH CARE

Supreme imaging, tailored for pets

Esaote has always been committed to advance the health and well-being of animals with a proven track record of system installation and a long history in Veterinary MRI.

Today, Esaote is a step ahead and is proud to introduce the “Supreme™ vet-mr”, its first 1.5 Tesla MRI system dedicated to veterinary.

The collaborative efforts with the veterinary community and luminary sites underscore the commitment to provide a 1.5T MRI experience that aligns with the dynamic and evolving landscape of veterinary medicine.



Side by side with the veterinary community

Tailored services to the specific needs of the veterinary world.

Unparalleled insights for accurate diagnoses

Empowering veterinarians to make the right decisions about the health and well-being of their patients.

Tailored for veterinary use

Dedicated veterinary scan protocols, for animals of different types and sizes.

Customized veterinary software

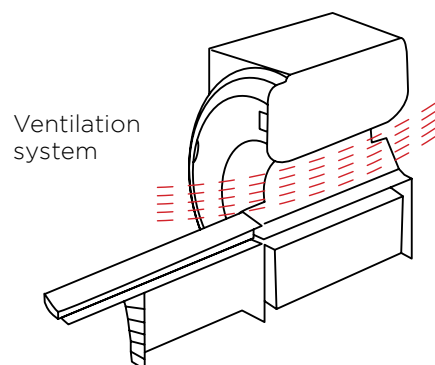
Veterinary interface to accelerate the routine improving usability and diagnostic efficiency.

The forefront of veterinary imaging diagnostics

1.5T short bore magnet for small animals



- ✓ 60 cm bore diameter
- ✓ Comprehensive coils solutions, Free coil combination
- ✓ Dedicated veterinary software and interface
- ✓ Large Field of View, No patient re-positioning
- ✓ Mobile device remote control and review*
- ✓ Digital optical fiber transmission
- ✓ Intelligent Parallel Acquisition Technology, Rapid scanning
- ✓ Zero helium boil-off technology
- ✓ High homogeneity magnetic field
- ✓ Cavity ventilation to maintain the correct animal temperature

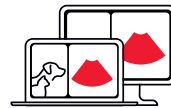


*Optional



Comfortable

- Large aperture for easy patient positioning
- Patient table unit, consisting of the patient table and positioning system, for easy handling, even for large dog breeds
- Veterinary 1.5T RF coils designed to perfectly fit with animal anatomy



Efficient

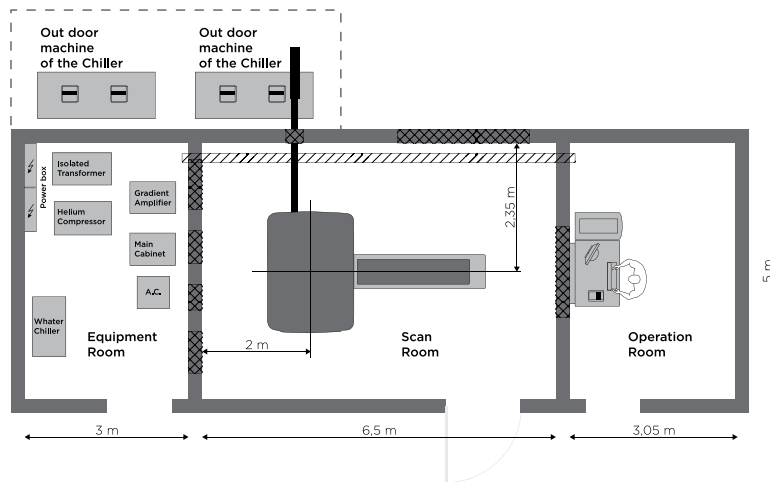
- Customized veterinary software and protocols for a streamlined workflow
- Optical fiber transmission to minimize loss of signal and increase SNR
- Low helium consumption and cost of maintenance
- The magnetic field generated by a superconductive coil, cooled with liquid helium, is optimized for zero helium boil-off technology.
- Easy remote access for maintenance



Performing

- Clear images thanks to the high homogeneity field
- Multichannel RF coils provide an excellent signal-to-noise ratio, due to the presence of low-noise preamplifiers, ensuring proper enhancement of the signal

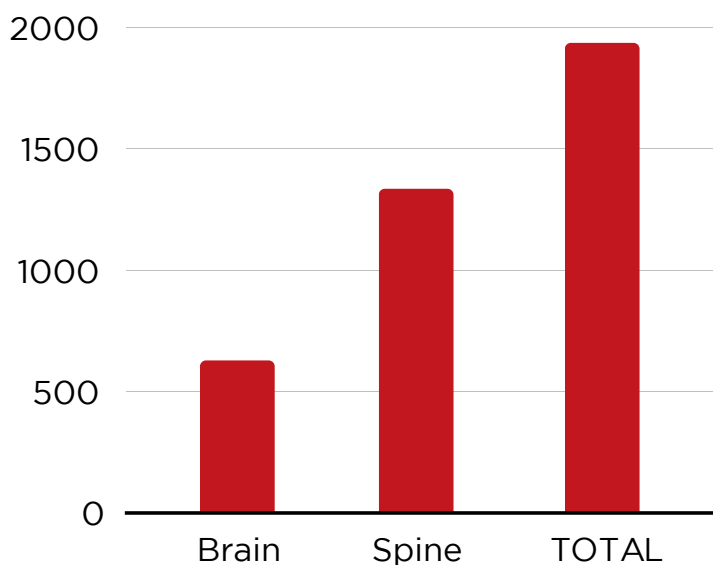
Installation



Example of typical installation

System productivity

1st year of installation



Note: Analysis of neurological examinations

“In one year with 1.5T Esaote Supreme™ vet-mr, we have successfully diagnosed neurological and orthopedic diseases in more than 1600 clinical cases.”

*Dr. Massimo Baroni
DVM, Dipl ECVN Head of
Neurology Service at
Valdinievole Veterinary Clinic*

Do more in less time



Zero helium boil-off



Fast and easy workflow



Small footprint

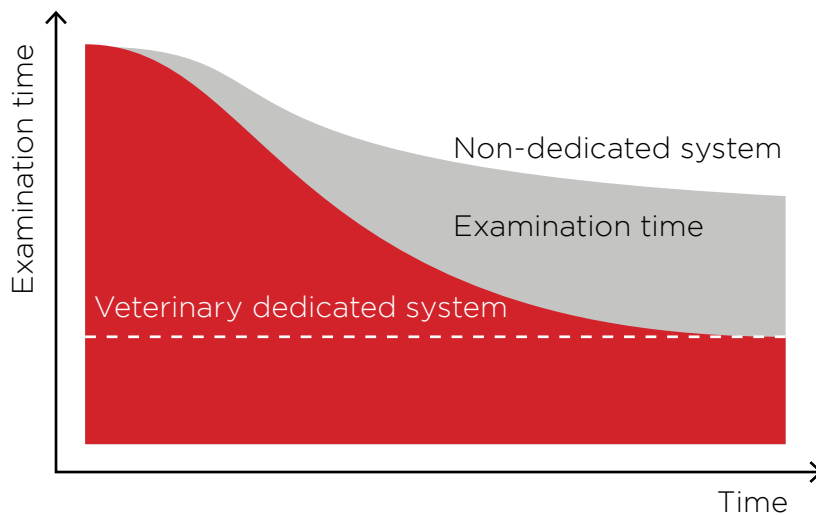


Reliable service



Eco-Friendly

Customized veterinary software and protocols contributes to daily time savings for each scan. By having a system meticulously crafted for animals and their management, the workflow for the operator becomes seamless.



VET applications

Dedicated veterinary MRI protocols are a significant step ahead in diagnostic imaging for animals providing an added value to veterinarians by enhancing image quality in terms of signal-to-noise ratio and spatial resolution.



Neurocranium

Neurocranium, Splanchnocranium



Spine

Cervical, cervico-thoracic,
Thoraco-Lumbar, Lumbo-Sacral



Limbs

Carpus, Elbow, Fetlock, Hip, Hock, Hoof,
Pastern, Paw, Shoulder, Stifle



Abdomen

Liver, pancreas, kidneys and other small
organs

Dedicated VET interface



Easy input of all animal data through user-friendly dropdown menus.

Within the patient data section, are provided designated fields to enter the owner's information and select the specific species and breed of the animal. Moreover, having a precise MRI orientation makes it possible to specify the pet's positioning on the magnet.



During the examination planning phase, the Veterinary user interface simplifies the process by presenting images oriented correctly for veterinary purposes, complete with relevant DICOM fields.



Supreme™ vet-mr comes with comprehensive library of protocols, developed with vet luminaries, dedicated to animals of diverse types and sizes.

Elevate your veterinary diagnostics with a solution tailored to the unique needs of your patients.

Experience the cutting-edge Supreme™ vet-mr, offering a comprehensive range of specialized RF coils equipped with state-of-the-art multi-channel technology.

Meticulously crafted to perfectly fit the diverse anatomies of various animal sizes and breeds, Supreme™ vet-mr coils ensure precision and optimal imaging quality.



Head Coil



Large Head Coil



Neck-thorax coil



Small Head Coil



Spine Coil



Body Coil



Flexible Coil*

*Optional

Experience enhanced workflow with veterinary MRI protocols



Short bore opening and a comfortable patient table for the operator.

From the straightforward animal positioning to data input using Supreme™ vet-mr user-friendly interface, performing MRI scans has never been more effortless.

Imaging protocols tailored for veterinary professionals.

Supreme™ vet-mr is designed for operation by a single operator. An extensive collection of protocols, collaboratively crafted with veterinary experts, designed specifically for animals of varying types and sizes.





Guiding users through MRI scanning.

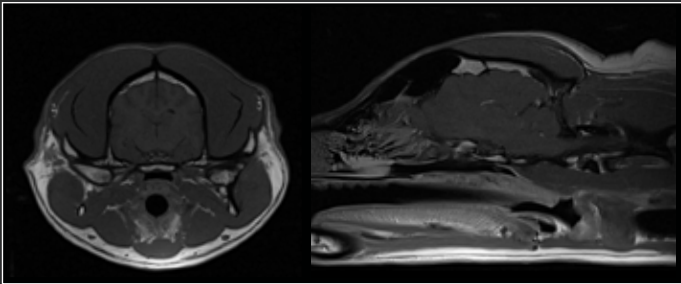
Esaote provides tutorials, collaboratively developed with key opinion leaders in veterinary medicine, to illustrate the step-by-step procedures for scanning each anatomical area.

By the side of animals.

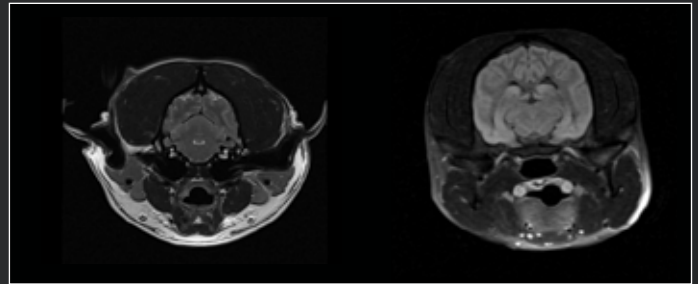
Creating an environment where every aspect of the animal's experience, from diagnostics to treatment, reflects the deep-seated commitment to their overall well-being and happiness.



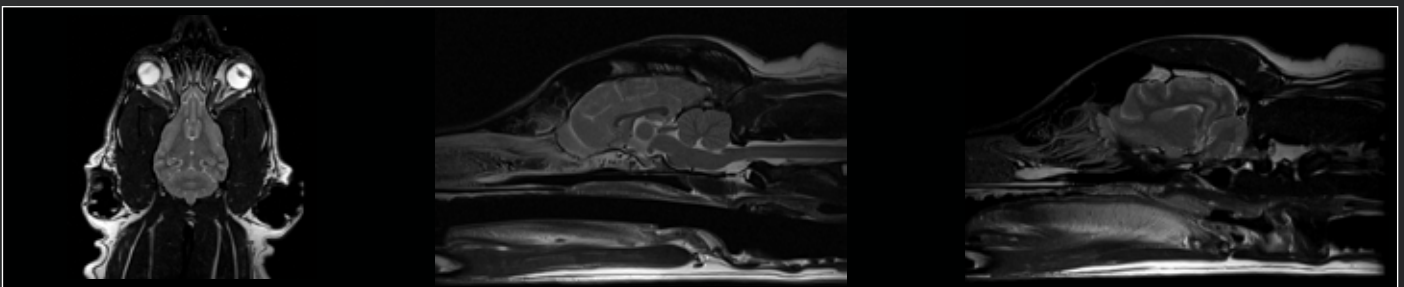
Elevate your veterinary care



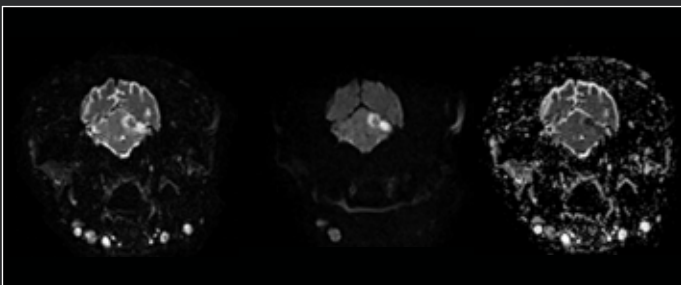
Transverse and sagittal T1W images of a normal canine brain



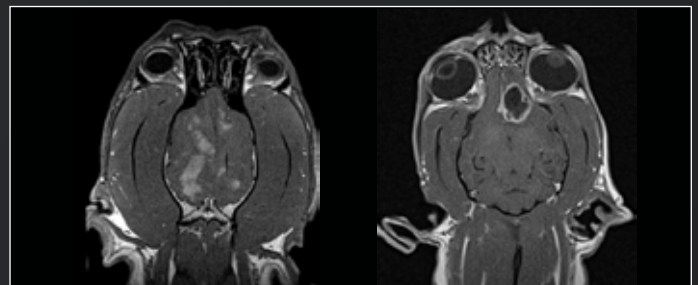
Transverse T2W and FLAIR sequence of a normal canine brain



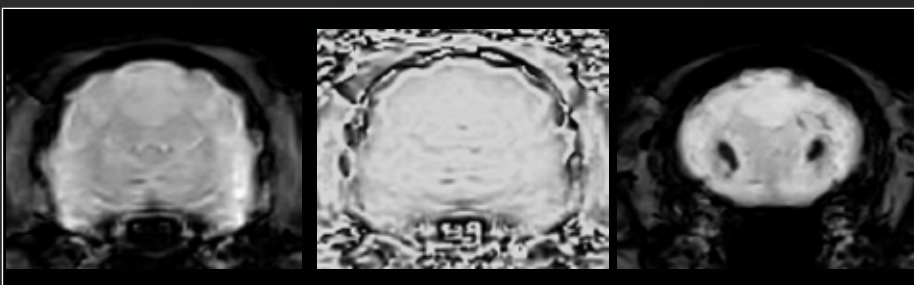
High resolution Dorsal and Sagittal T2W slices



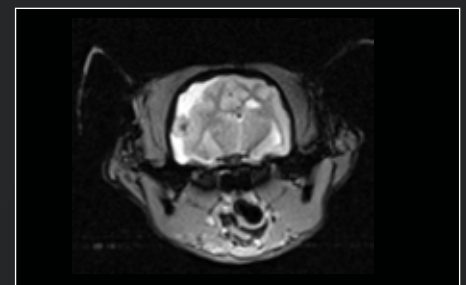
Diffusion-weighted magnetic resonance imaging (DWI) of a cerebral infarction in a dog



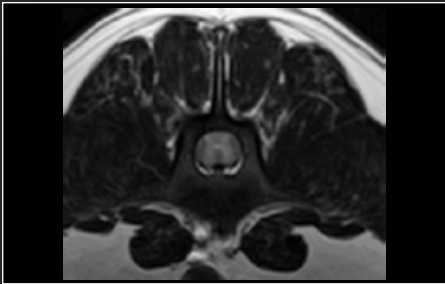
Dorsal T1W slices with Contrast Uptake in two dogs with pathological brain



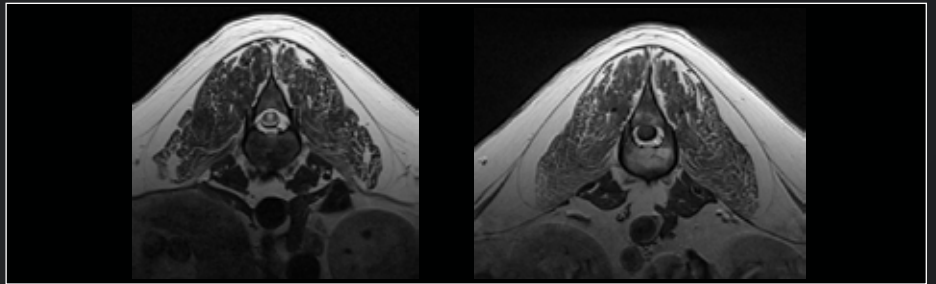
Transverse susceptibility weighted imaging (SWI) sequence of a dog brain: SWI Magnitude; SWI Phase; SWI minimum intensity projection (mIP).



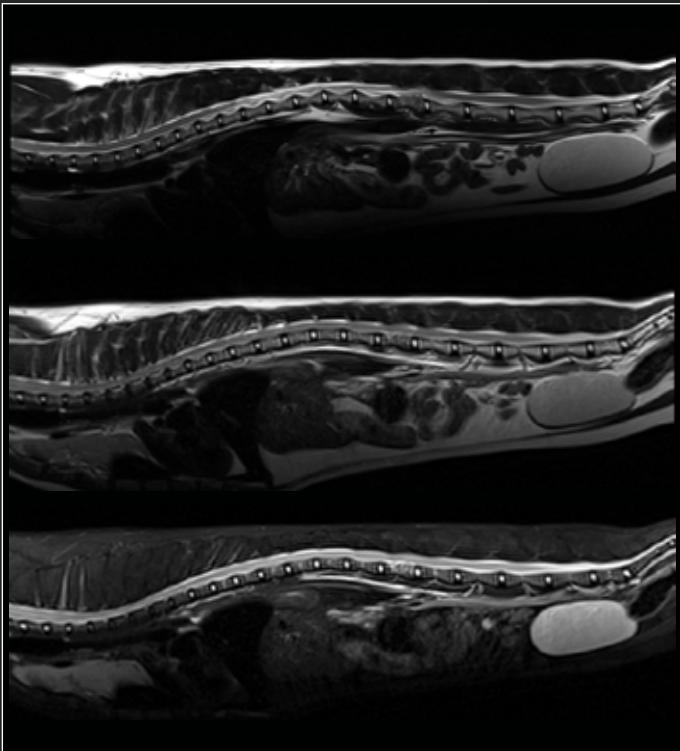
Transverse T2* weighted gradient echo (GE) of parietal meningioma in cat



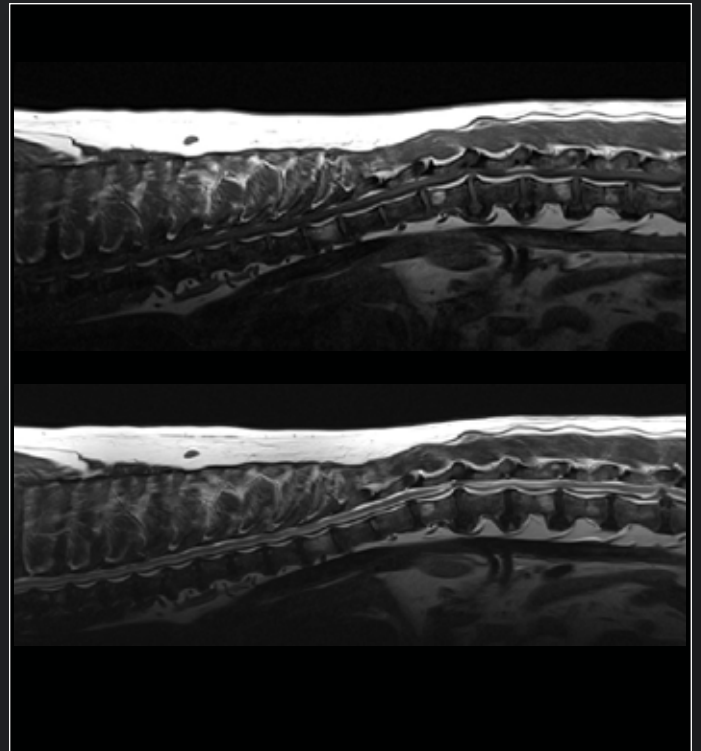
High resolution transverse T2W of a dog with spinal cord pathology



High resolution transverse T2W and FLAIR sequence of a large dog

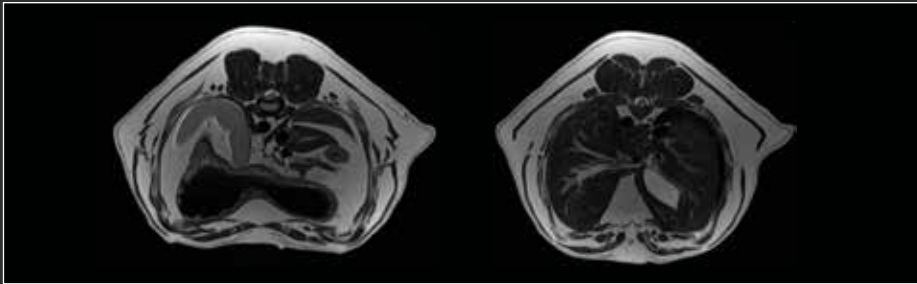


Sagittal T2W and WFST2 of feline L2 vertebral angiomatosis

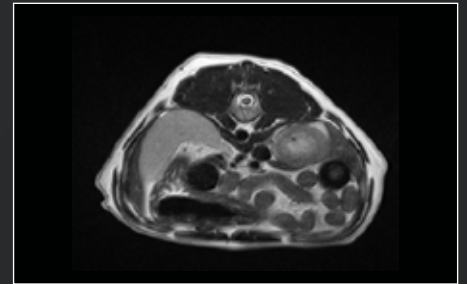


Multiple protruding discs in thoracolumbar, T1W and T2W slices

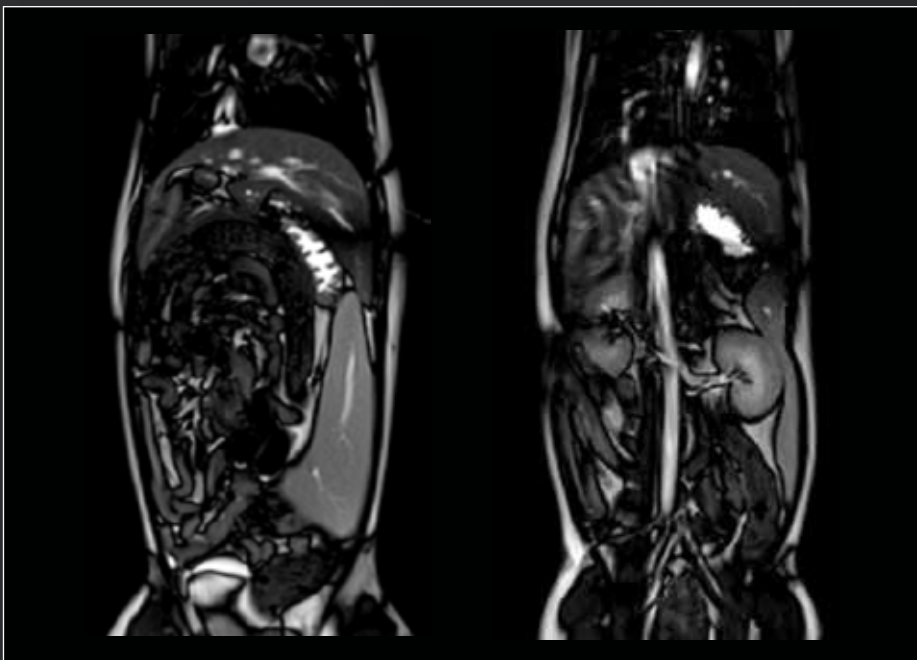




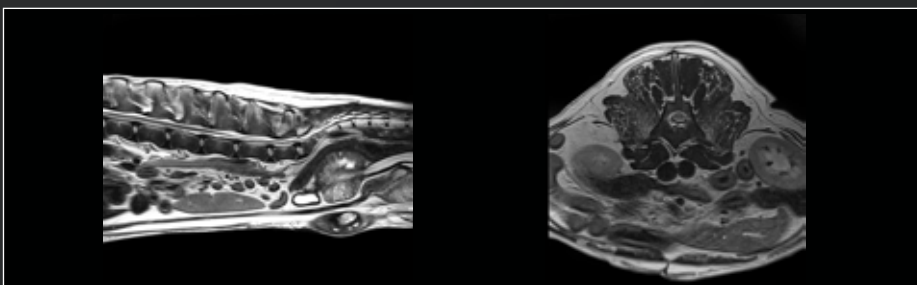
T2W of canine abdomen with respiratory gating



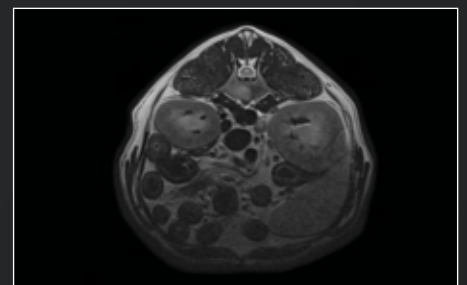
Transverse T2W with "Propeller" technique



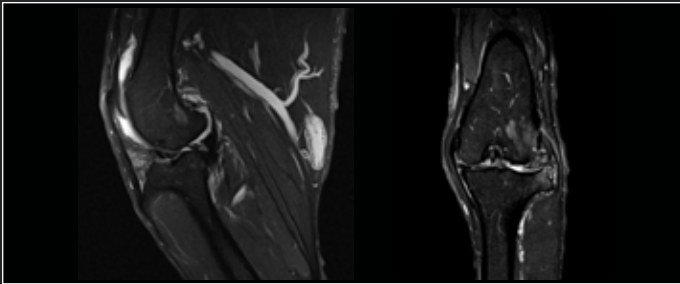
Abdominal imaging of medium dog with balanced SSFP sequence



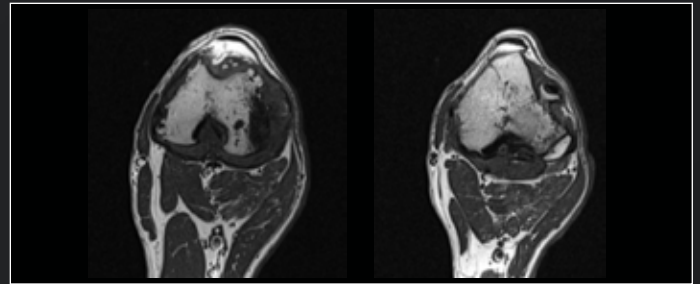
Sagittal and Transverse T2W of canine abdomen with body coil



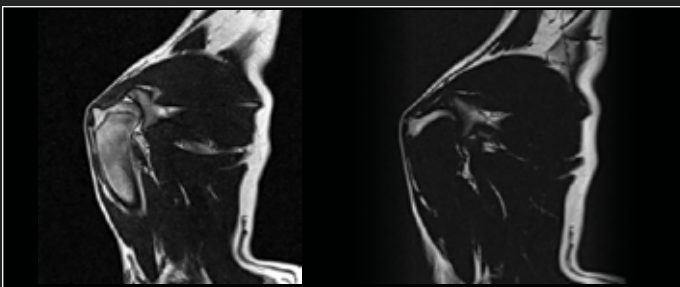
Abdominal T2W image of dog with spine coil



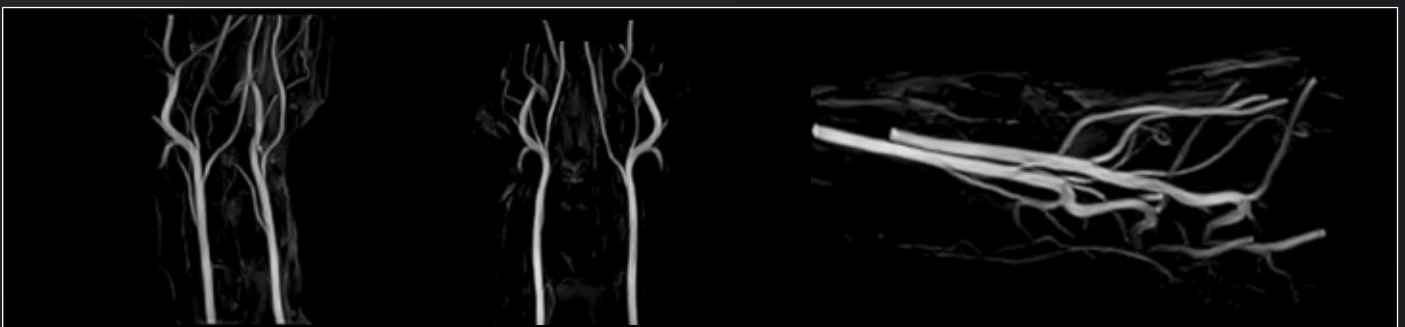
Sagittal and Dorsal FatSatPD in a dog stifle with meniscal rupture



Arthritis of the canine stifle joint, Transverse T1W slices



WFST of a shoulder with humeral periostitis

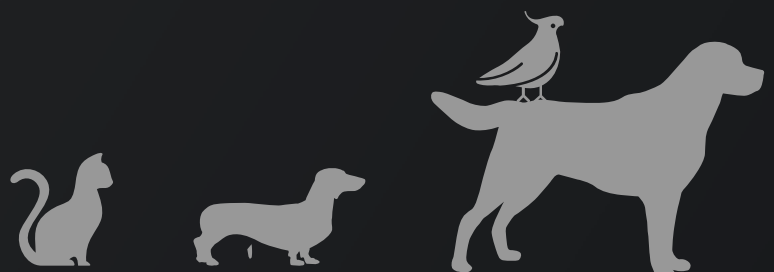


MRA imaging of canine brain

“It is a widely held belief that working with 1.5T should automatically equate to quality. This is not always true. The optimization of Esaote Supreme™ vet-mr allowed us to obtain images with excellent signal-to-noise ratio and contrast and great spatial resolution, working with slice thickness of 2-2.5 mm. This ensured superb diagnostic results.”

Dr. Massimo Baroni

DVM, Dipl ECVN Head of Neurology Service at Valdinievole Veterinary Clinic



Be part of the veterinary community

Esaoite's robust collaboration with leading veterinary institutions ensures our constant alignment with the dynamic needs and trends in the veterinary field.

This approach not only enriches our understanding but also fosters a sense of collaboration and shared purpose within the broader veterinary community.

Together, we are shaping the future of veterinary care.





Veterinary MRI Community

Being an integral part of the veterinary journey.



Worldwide Meetings

To increase your knowledge in diagnostic imaging.



Worldwide hands-on

A practical, interactive session to be directly engaged with MRI.



Assistance services

Starting from any concerns, through the installation, to the on-site/online service assistance.



Health with care

Helping the veterinarian by providing the best diagnostic imaging.



Clinical Application support

Comprehensive training and continuous follow-up from clinical experts in MRI applications, from the initial instruction to the final customization of the system.



Coaching center

Opportunity to work alongside experts and reference centers to gain practical experience and become proficient in using the system.



Veterinary MRI Webinars

Clinical discussions led by internationally renowned speakers.

An educational library entirely at the disposal of users.



Veterinary Educational

Free access to clinical, scientific topics and advanced technologies.



160000496 Ver.01



TÜVRheinland®
Precisely Right.

Importer: Esaote S.p.A. - sole-shareholder company

Via Enrico Melen 77, 16152 Genova, ITALY, Tel. +39 010 6547 1, Fax +39 010 6547 275,
info@esaote.com - www.esaote.com

Manufacturer: Beijing Wandong Medical Technology Co.,Ltd. Building 3, No.9,
Jiuxianqiaodong Road, Chaoyang District, 100015 Beijing, China

Technology and features are system/configuration dependent. Specifications subject to change without notice.
Information might refer to products or modalities not yet approved in all countries. Product images are for
illustrative purposes only. For further details, please contact your Esaote sales representative

 Italian design 

Please visit us online
for more information

